



Sahtu Land and Water Board

Public Information Session

Tony Morris
Regulatory Specialist
Sahtu Land and Water
Board
(SLWB)

Bonnie Bergsma
Regulatory Specialist
Sahtu Land and Water
Board
(SLWB)

Ian Brown
Regulatory Specialist
Sahtu Land and Water
Board
(SLWB)



Public Information Session

Today's presentation:

- The Boards and our Roles
- Co-management system
- Regulatory Process
- Current Operations
- Online Resources

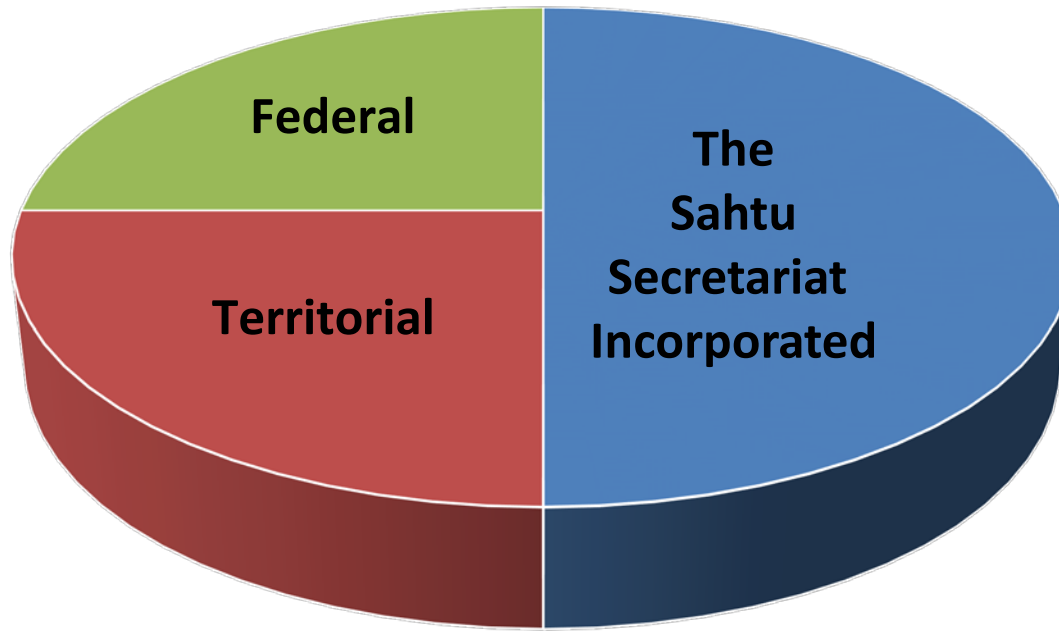


SLWB Role

- Regulate the use of land and water, and the deposit of waste.
- We are an Administrative Tribunal that;
 - Receives applications
 - Collects evidence.
 - Creates operating conditions.
 - Issue Permits and Licences.

What is Co-Management?

Board Membership



Sahtu Land Use Planning Board (SLUPB)



Heather Bourassa- Chair

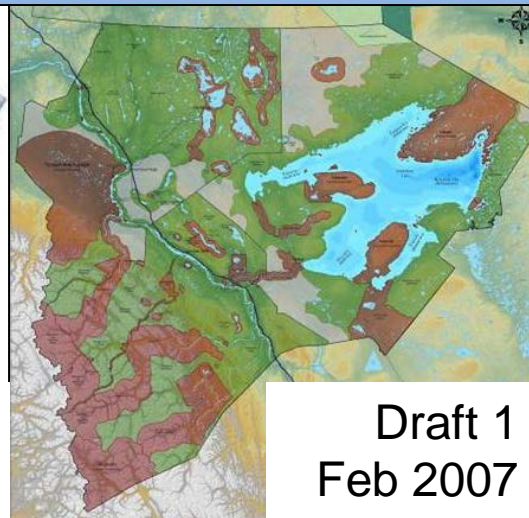
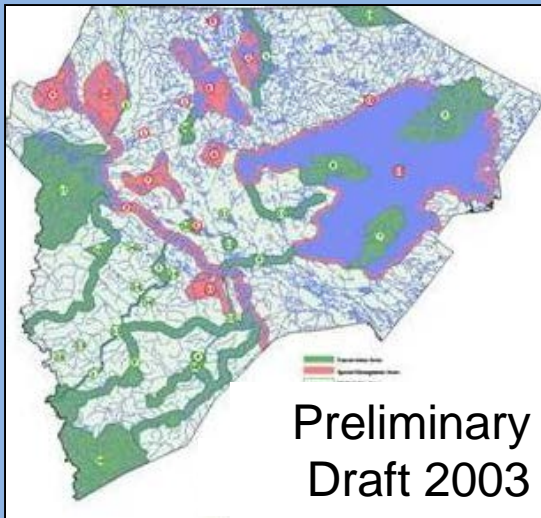
Bob Overvold- Canada
Nominee

Danny Bayha- GNWT Nominee

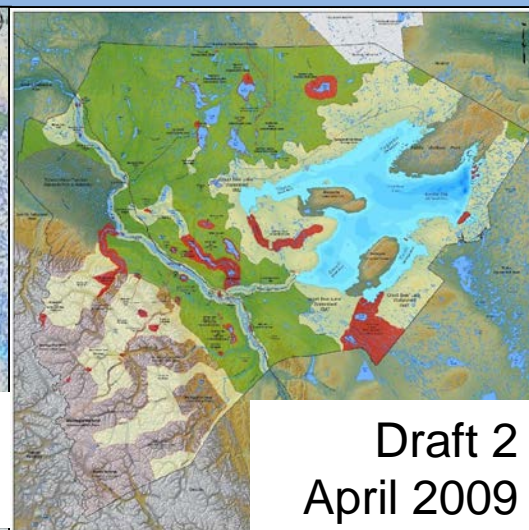
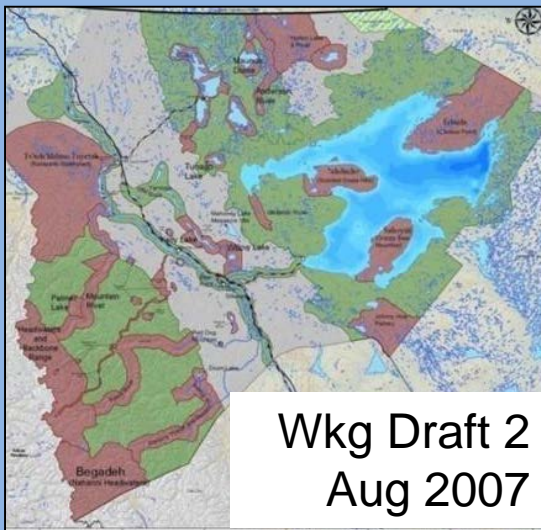
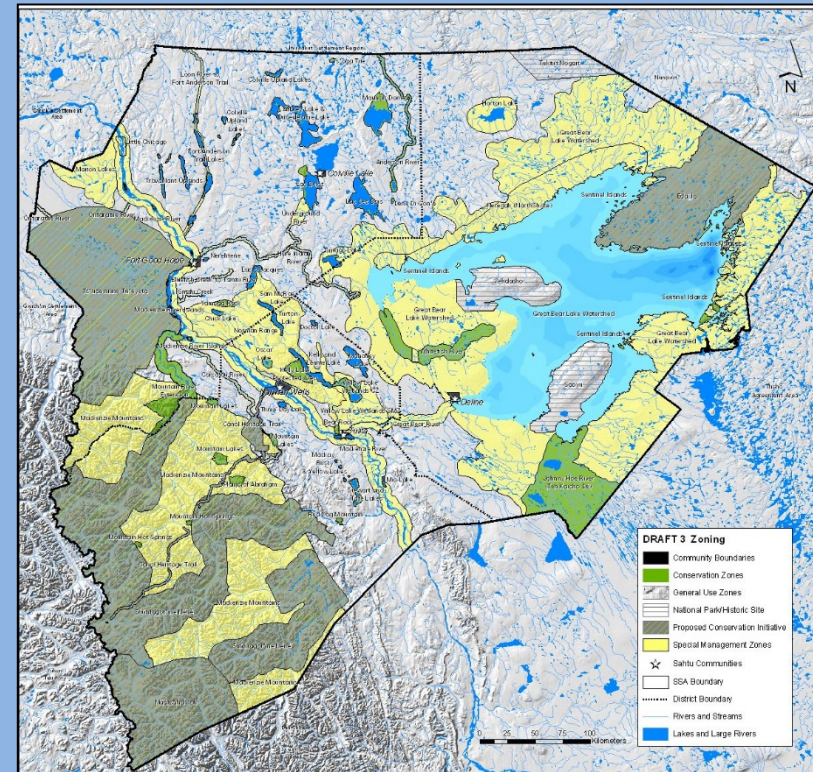
Rick Hardy- SSI Nominee

Collin Bayha- SSI Nominee

SLUP 1998-2013



Draft 3 July 2010



Sequential Approval Process

Adopted by SLUPB

The Sahtu Secretariat Inc.

GNWT(ENR)

Government of Canada (AANDC)

April 29, 2013

July 4, 2013

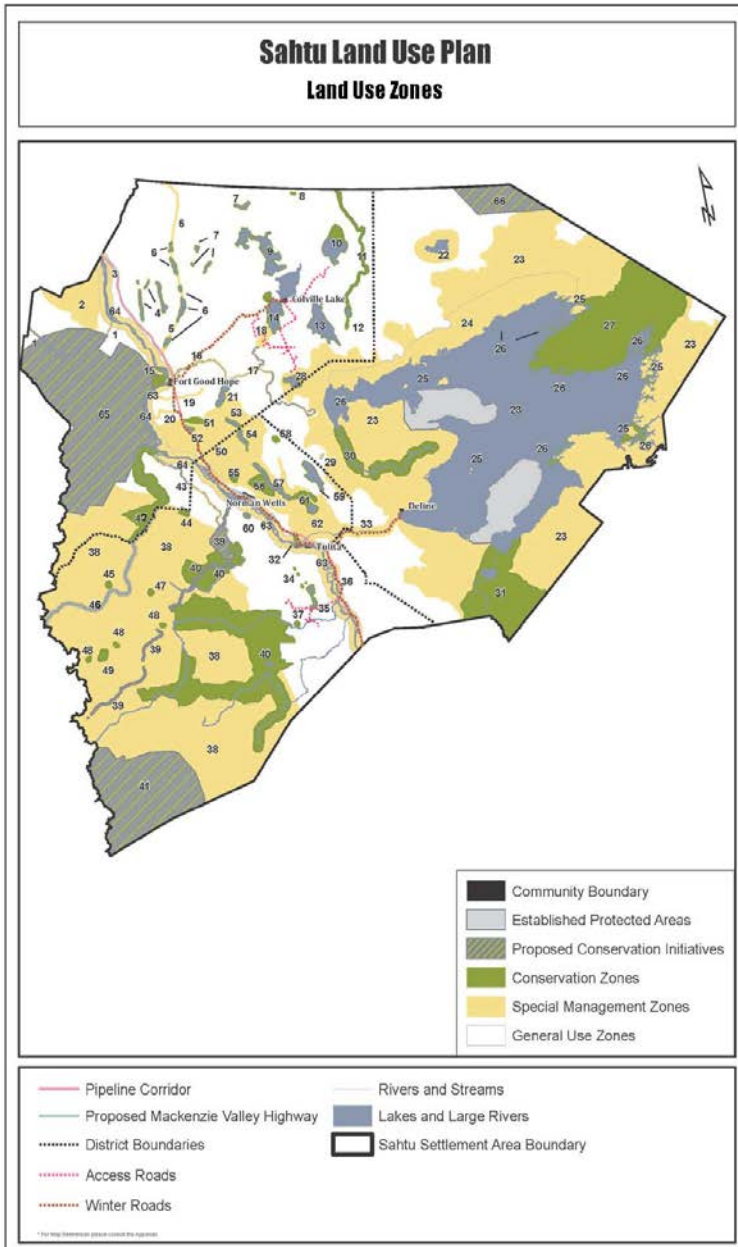
July 25, 2013

Aug. 8, 2013



Sahtu Land Use Plan

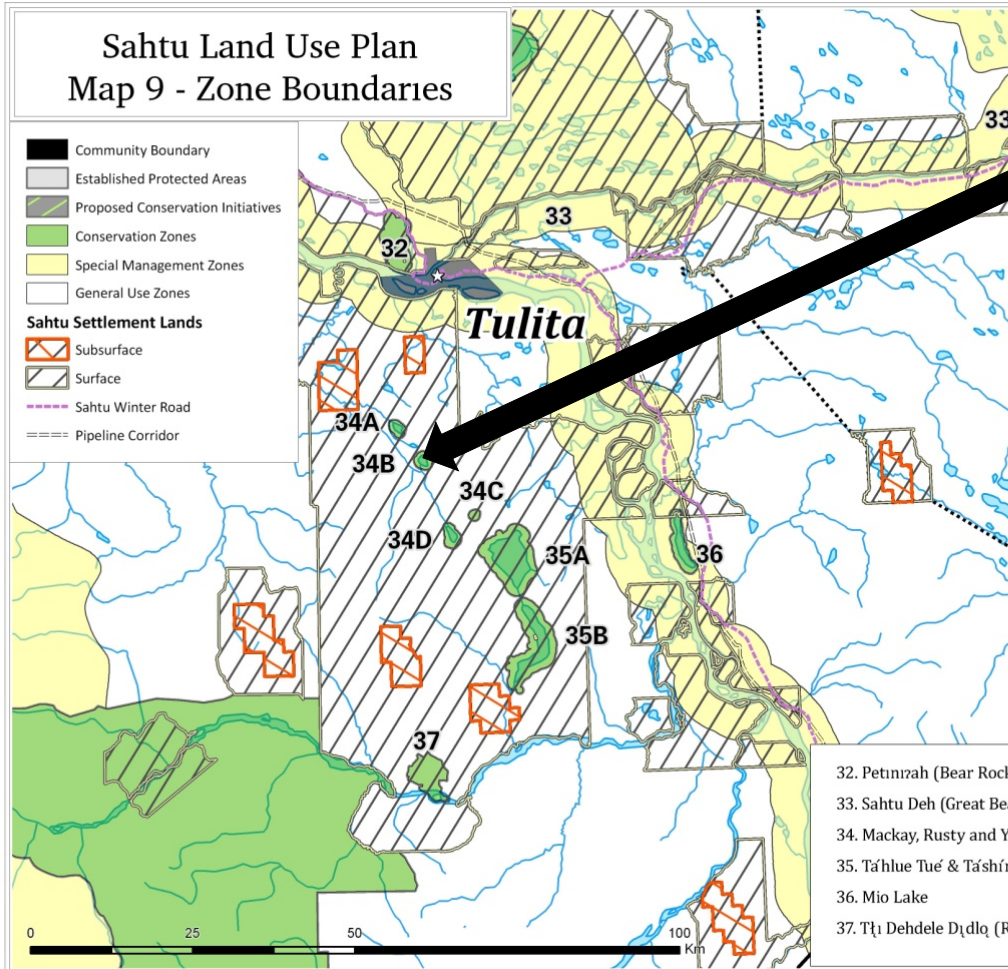
Plan



- | | |
|--|---|
| 1 Besla Nilne (Ontaratue River) | 35 Táhlu Tué & Táshín Tué (Stewart and Tate Lakes) |
| 2 Öhdarah Tué (Marion Lakes) | 36 Mio Lake |
| 3 Shigago (Little Chicago) | 37 Táî Dehdele Dídîô (Red Dog Mountain) |
| 4 Travailant Uplands | 38 Mackenzie Mountains |
| 5 Sihonilíne Æehtene (Loon River to Fort Anderson Trail) | 39 Do Et'Q (Doi T'oh Territorial Park and Canol Heritage Trail Reserve) |
| 6 Fort Anderson Trail Lakes | 40 Shúhtagot'íne Néné (Mountain Dene Land) |
| 7 Colville Upland Lakes | 41 Náát's'ihch'oh |
| 8 Bela Nera Dele (Where the Wolf Crosses) | 42 Faæfa Nilíne (Mountain River Extension) |
| 9 Tué Sho & Dunedelatue (Aubre Dunedelatue) | 43 Carcajou River |
| 10 Ayonikí (Maunoir Dome) | 44 Florence Lake |
| 11 Sihonilíne (Anderson River) | 45 Palmer Lake |
| 12 Dene Di Gon'e | 46 K'ááchohtíídeé (Mountain River) |
| 13 Tashín Tué (Lac Des Bois) | 47 Cache Lake |
| 14 Nilín Tué (Lac Belot) | 48 Tuésene (Mountain Hot Springs) |
| 15 Fossil Lake | 49 Mirage Mountain |
| 16 Ne'Rahten | 50 Norman Range |
| 17 Hare Indian River | 51 Yamôga Fee (Yamoga Rock) |
| 18 Neyádalín (Underground River) | 52 Chick Lake |
| 19 Bluefish Creek to Tsintu River | 53 Sam McCrae Lake |
| 20 Snafu Creek | 54 Turton Lake |
| 21 Nôfee K'ôdah Tué (Lac a Jacques) | 55 Datzimí Tué (Oscar Lake) |
| 22 Arakíe Tué (Horton Lake) | 56 Kelly Lake Protected Area |
| 23 Sahtu (Great Bear Lake Watershed) | 57 Lugedegíl Tué & Tuyehíla Tué (Kelly and Lennie Lake) |
| 24 Neregah (Northshore) | 58 Doctor Lake |
| 25 Du K'ets'edí SMZ (Sentinel Islands SMZ) | 59 Tuwí Tué (Mahoney Lake) |
| 26 Du K'ets'edí CZ (Sentinel Islands CZ) | 60 Three Day Lake |
| 27 Edaííla (Caribou Point) | 61 K'ááíô Tué CZ (Willow Lake CZ) |
| 28 Turatlin Tué (Tunago Lake) | 62 K'ááíô Tué SMZ (Willow Lake Wetlands SMZ) |
| 29 Clement Lake | 63 Deh Cho (Mackenzie River) |
| 30 Luchaniline (Whitefish River) | 64 Mackenzie River Islands |
| 31 Tehkaicho Dé (Johnny Hoe River) | 65 Ts'ude niline Tu'eyeta (Ramparts River and Wetlands) |
| 32 Petiniæah (Bear Rock) | 66 Tuktut Nogait |
| 33 Sahtu Deh (Great Bear River) | |
| 34 Mackay, Rusty and Yellow Lakes | |

Sahtu Land Use Plan

Sahtu Land Use Plan
Map 9 - Zone Boundaries



34. Mackay, Rusty and Yellow Lakes

Designation	Conservation Zone	
CRs & Prohibitions	CRs # 1-14 Prohibition: Bulk water removal; Mining E&D; Oil and Gas E&D; Power Development; Forestry; Quarrying	
Map #	9	
Area	18 km ²	
Land Ownership	Sahtu Subsurface Ownership	Sahtu Surface Ownership
	-	100%
Location & Boundaries	A 500 m buffer is applied around Mackay (34A), Rusty (34B) and Yellow (34C) Lakes. They lie south of Tulita, west of the Mackenzie River.	

Reason for Establishment

Tulita identified Mackay and Rusty lakes as important fish lakes which allowed people to survive during extreme weather and when hunting was difficult. Community concerns are the protection of water quality, riparian habitat/shorelines, continued access for recreational and subsistence use and the health of the fish populations upon which people have depended for a long time.

Values to be Protected: Archaeological and burial sites.

Values to be Respected: Moose, waterfowl and migratory bird habitat, furbearers and boreal woodland caribou occur throughout. The Mackay Range has a high density of peregrine falcon nest sites²⁶. Rusty Lake is a raptor nest site and area. Mackay and Rusty lakes are made up of karst features. Fish harvest takes place on Mackay and Rusty Lakes. Berry and plant harvesting areas are recorded.

Values to Take into account: Traditional trails (the Mountain Dene Trail to the Mountains is one of special note²⁷), cabins on Mackay and Rusty Lakes, cultural and historic sites, recreation sites, firewood and log timber harvest. Within the Norman Wells community drinking water source catchment.

Economic Importance: Oil and gas potential: 80% high; 16% moderate high. Located in an Outfitting Region with registered outfitter in operation.

²⁶ Haas, C.A., & Wilson, J.M., Important Wildlife Areas in the Western Northwest Territories, 2012, Manuscript Report No. 221, Environment and Natural Resources, Government of the Northwest Territories, Yellowknife, NT

²⁷ Prepared by The Sahtu Heritage Places and Sites Joint Working Group, January 2000 (2nd Edition). *Rakeéé Gok'ı God: Places We Take Care Of*. Written by Tom Andrews.

SLUPB role following approval:

- Consider and grant Exceptions to the SLUP
- On request can make Conformity Determinations
- Consider Amendments to the SLUP
(Requires the SSI, GNWT, AANDC approval)
- Planning activities to carry out a 5-year Review



Download the SLUP:
www.sahtulanduseplan.org



Scott Paszkiewicz
Land Use Planner/Executive Director
exec_director@sahtulanduseplan.org
(867) 598-2055

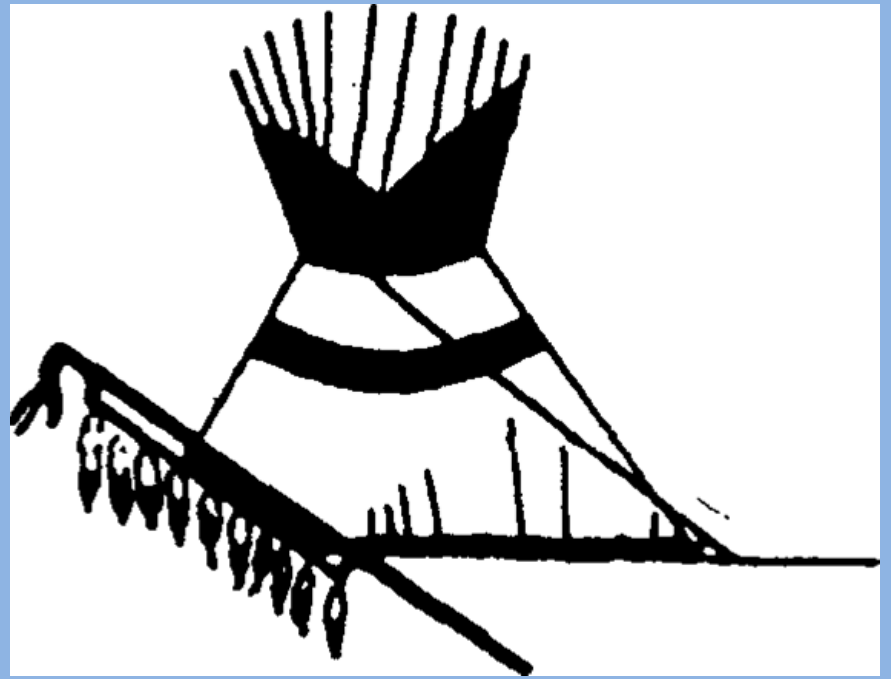
Taking Care of the Land and Wildlife

ʔehdzo Got'ıneḡ Gots'ę Nákedı
Sahtú Renewable Resources Board

for the Sahtú Land and Water Board
Community Tour
March, 2014

Who We Are

- Created by the Sahtú Dene and Metis Comprehensive Land Claim Agreement
- The “main instrument of wildlife management in the Sahtú”



What We Do

- Research
- Wildlife Management
- Species At Risk
- Advice on development applications
- Public education
- Collaborate with ʔehdzo Got'ıneę

Key Issues – A Changing Environment

- Shale oil play
- Bluenose East caribou decline
- T̄dzı recovery planning (Species At Risk)
- Maintaining the traditional economy



E mail

Enter Your email

join

[Home](#)

[About us](#)

[RRC](#)

[Resources](#)

[Sahtu](#)

[Scholarships](#)

[Links](#)

[Calendar](#)

[Contact us](#)

Máhsí

Welcome to the website of the Zehdzo Got'ine Gots'e Nákedi – the Sahtú Renewable Resources Board. Our Dene name means "helpers of the Zehdzo Got'ine: the Trap People."

We work together with Zehdzo Got'ine in the five communities of the Sahtú Region to maintain Dene and Métis harvesting traditions, and keep the land and animals healthy for future generations.





You are posting, commenting, and liking as Sahtú Got'ch'ádí - Wildlife of the Sahtú Region — Change to Deborah L Simmons



Sahtú Got'ch'ádí - Wildlife of the Sahtú Region

★★★★☆ (9 ratings)

573 likes · 46 talking about this · 13 were here

Update Page Info

✓ Liked

✓ Following

Community Organization
Sharing knowledge about wildlife and harvesting in the Sahtú Region of Denendeh, the Northwest Territories.



573



Máhsi!

ᑭᑭᑦᑦ ᑭᑭ'ᑭᑭ ᑭᑭ'ᑭ ᑭᑭᑭᑭ
Sahtú Renewable Resources Board

www.facebook.com/sahtuwildlife

www.srrb.nt.ca

director@srrb.nt.ca

PO Box 134

Tulít'a, NT X0E 0G0

Phone 588-4040

Fax 588-3324





National Energy
Board

Office national
de l'énergie



Regulation of Shale Oil & Gas Activities

Bharat Dixit

Technical Leader – Exploration & Production

Sahtu Settlement Area Community Engagement

Norman Wells and Tulita, NT

05 and 06 March 2014

Canada 



National Energy
Board

Office national
de l'énergie



Overview

- National Energy Board Role and Responsibilities
 - Till 31 March 2014;
 - After 31 March 2014
- Key Messages
- Discussion

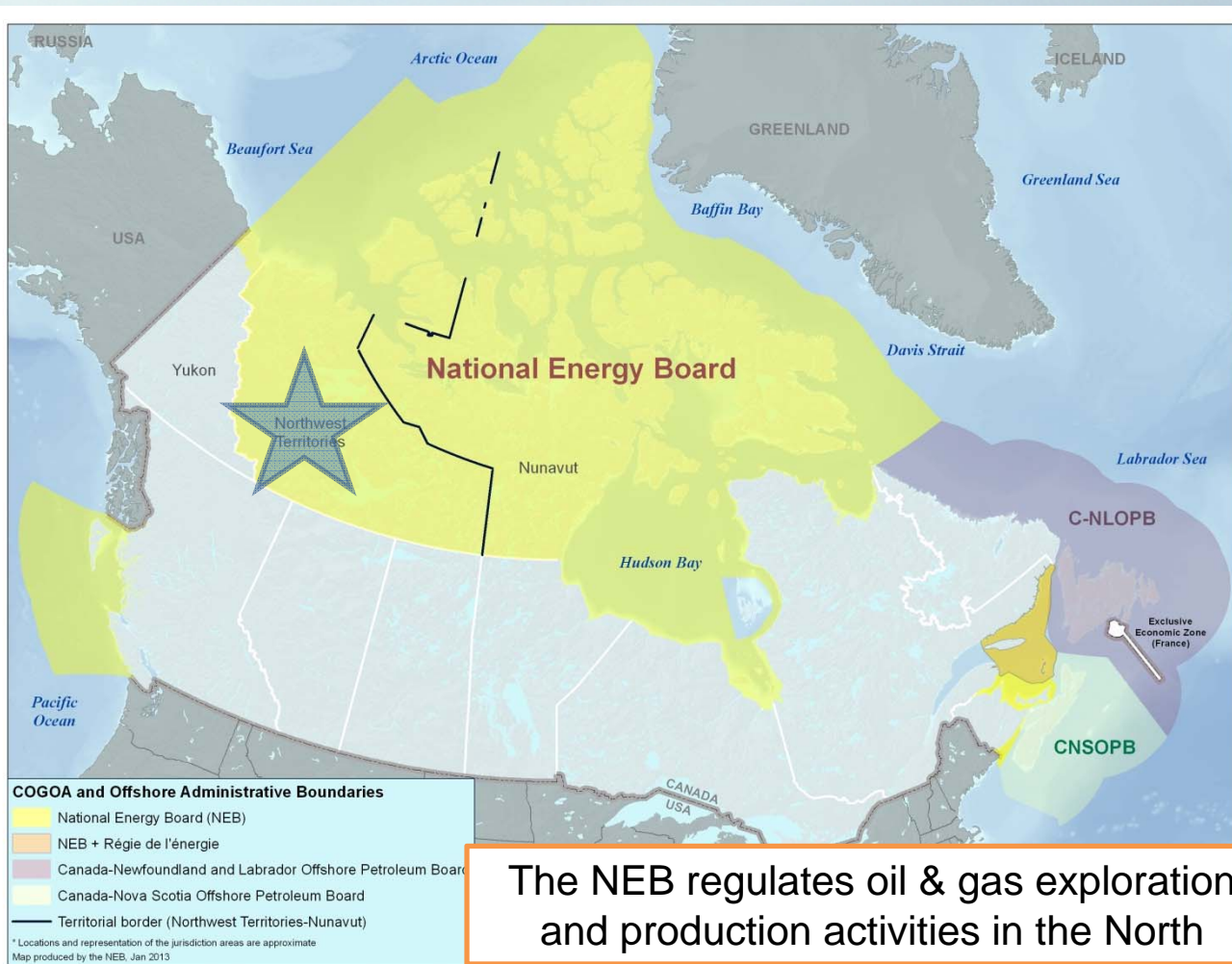


National Energy Board

Office national de l'énergie



Regulating Shale Oil and Gas Activities



The NEB regulates oil & gas exploration and production activities in the North

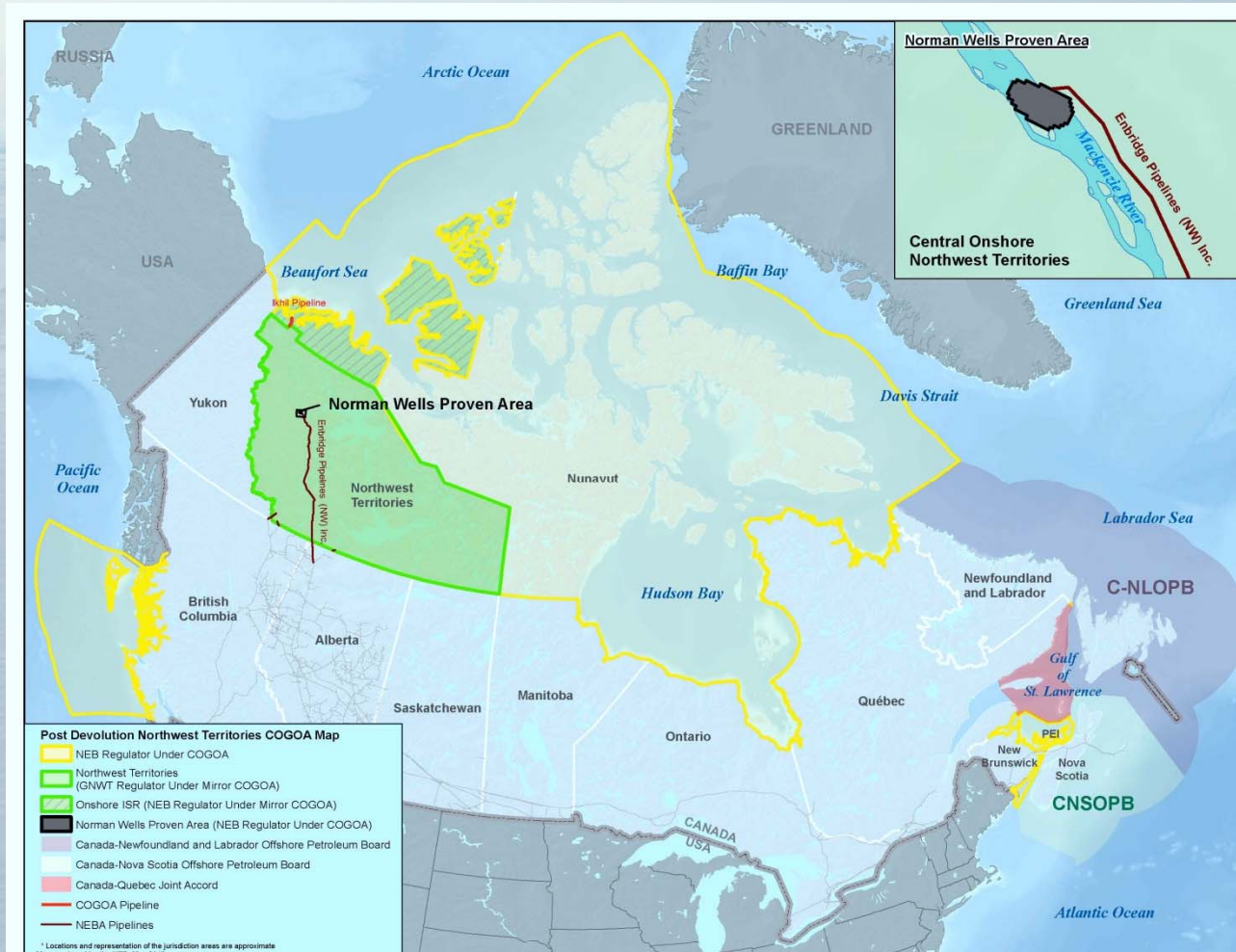


National Energy Board

Office national de l'énergie



Post-devolution COGOA Map





National Energy
Board

Office national
de l'énergie



Key Messages

- Operators need to demonstrate that they:
 - Can drill safely while protecting the environment
 - Can respond effectively when things go wrong
 - Have proof of financial responsibility
- We will take all available action to protect the environment
- Devolution – 01 April 2014
 - Northern agencies work cooperatively
 - Support to the GNWT regulator



National Energy
Board

Office national
de l'énergie



Contact Information

Bharat Dixit
Technical Leader, Exploration and Production
Operations Business Unit
National Energy Board
444 Seventh Avenue SW
Calgary, Alberta, T2P 0X8

Phone: 403 299 2792

Fax: 403 292 5876

Cell: 403 617 3887

E-mail: bharat.dixit@neb-one.gc.ca

url: <http://www.neb-one.gc.ca>





Regulatory Process

- 1) Land Leases
- 2) Access/Benefits Agreements
- 3) Permit/Licence
- 4) Monitoring





Regulatory Process

Phase 1: Application

Phase 2: Review

Phase 3: Decision



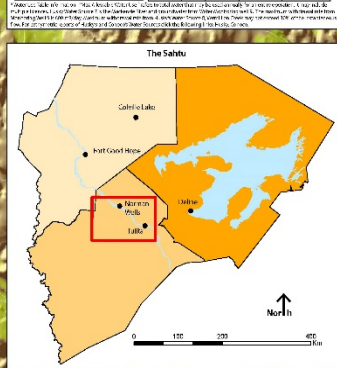
Closure and Reclamation

Permits stay open until site has been cleaned up or restored to a natural state.

Security: is money taken by the Board from the company to ensure clean up is done.

Sahtu Oil and Gas Development 2009 - 2014

Legend			
Colour Scheme			
Light blue	Water		
Dark blue	Water		
Green	Vegetation		
Yellow	Vegetation		
Orange	Vegetation		
Red	Vegetation		
Blue	Vegetation		
Black	Vegetation		
Water Use			
Operator	Source	Max Flow (litres/sec)	2012-2013 Actual Flow (litres)
1	2,220,249	4,235	70
2	945,055	14,850	0
3	715,385	3,070	0
4	14,577	5,040	0
5	4,78,480	3,821	0
6	19,527	1,750	0
7	1,352,121	14,330	0
8	19,234	2,000	0
Site Symbology			
Argent	1	4,235	0
Argent	2	14,850	14,716
Argent	3	3,070	0
Argent	4	5,040	0
Argent	5	3,821	0
Argent	6	1,750	0
Argent	7	14,330	0
Argent	8	2,000	1,180
Water Use			
Operator	Source	Max Flow (litres/sec)	2012-2013 Actual Flow (litres)
1	2,220,249	4,235	70
2	945,055	14,850	0
3	715,385	3,070	0
4	14,577	5,040	0
5	4,78,480	3,821	0
6	19,527	1,750	0
7	1,352,121	14,330	0
8	19,234	2,000	0



Project Descriptions

Overview: The following is a brief description of the Oil and Gas related programs in the Sahtu region. Past, current and future work is summarized. **Capex** did not operate during the 2013-2014 winter season. 222.8 kms of the permitted 1017.8 kms of 2D seismic lines have been cut as of March 2014. Explorer's permit is valid until December 2016. For more information, see file 5118-304 on our registry.

The MGM Windy Island Program saw no work during the 2013-2014 season. Soil samples were taken during the summer of 2013 in order to assess reclamation efforts. Site reclamation will continue until the Land Use Inspector believes the site has returned to its original state. For more information, see file 5121-001 on our registry.

The MGM East Mackay Program did not operate during the 2013-2014 winter season. The 178 well was drilled, tested and completed during February 2013. All equipment and waste was removed from the lease and staging area. Future work includes sampling groundwater wells and ensuring the site is returned to its original state. For more information see file 5121-100 on our registry.

Conoco will be drilling two horizontal wells, E-75 and E-76, that will be geographically fractured during the 2013-2014 season. They will continue their geomechanics and surface water monitoring program from the 2012-2013 season, as well as use the vertical wells they drilled that year as microseismic monitors for the fracturing work. In early 2014, ConocoPhillips has applied for a new multi-season camp and storage area, as well as a geotechnical assessment program. For more information on the drilling operation for 2013-2014 see 5124-051 and 513-1-004 on our registry.



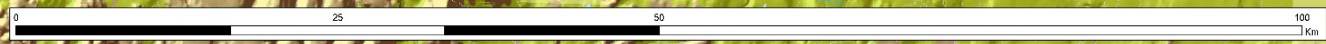
Projection: NAD 83 Lambert Conformal Conic
Datum: NAD 83
Central Meridian: 112.00
Standard Parallel(s): 59.00
False Easting: 1250000
False Northing: 0.00
Units: Metres

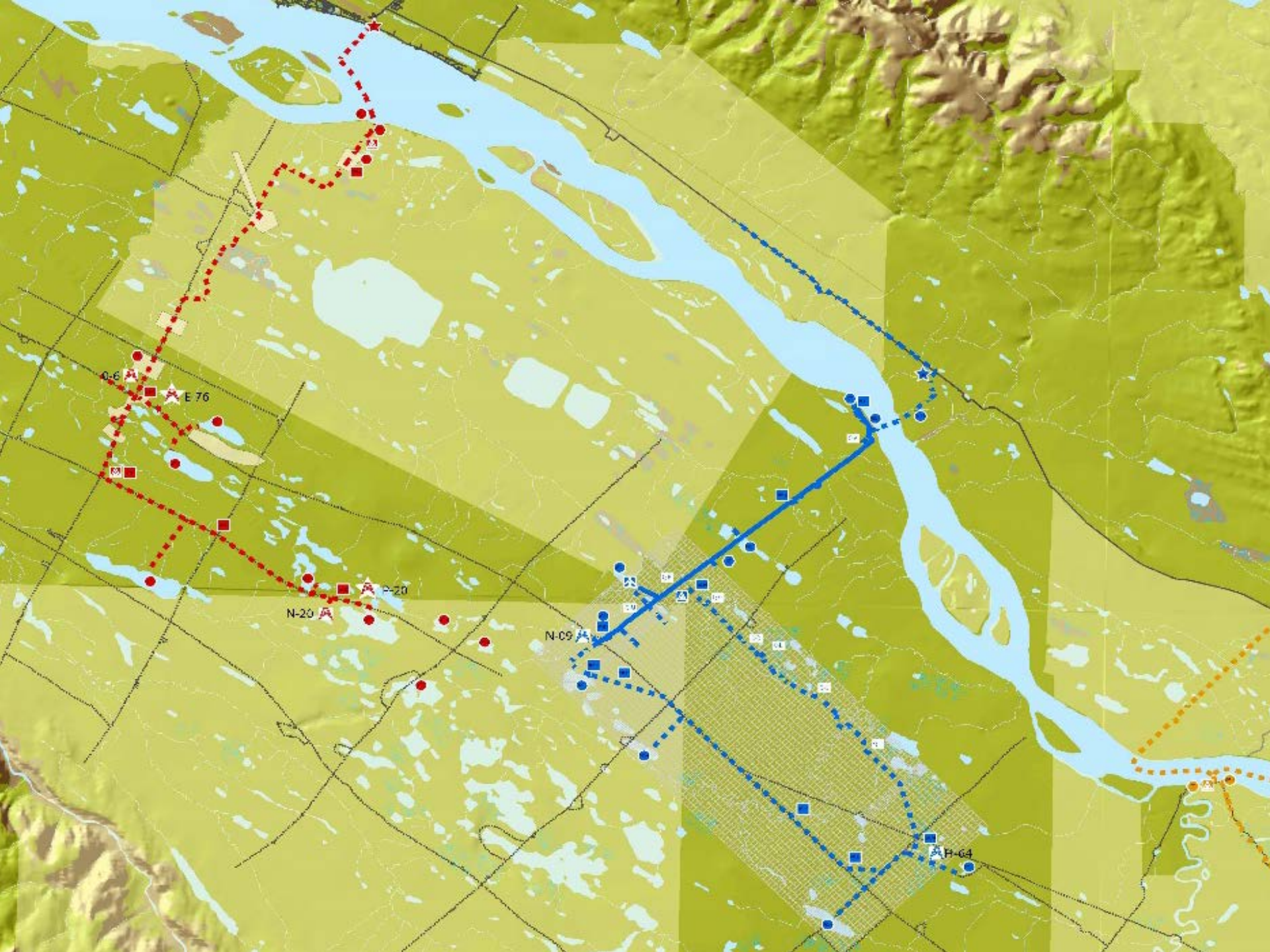
Source: Canadian Geographic Information System (CGIS)
Data: 2013-2014
Scale: 1:50,000

This map is not a legal document. Data is subject to change without notification. The map is a illustrative purpose only. It is not a guarantee of accuracy. It is not intended for use in any legal proceeding or dispute for any purpose other than for which it was originally intended.

This map was created by the Sahtu Land and Water Board on Feb. 14th, 2014 and is for informational purposes only.

Ken Brown
Geomatics Specialist
Phone: 867-938-2481 ext. 224
Email: k.brown@lwb.ca







Where to Look?

- SLWB Website....www.slwb.com
- Online Registry....access from website
- Online Review System....access from website



Home

Co-Management

Our Board

Regulatory Process

Current Initiatives

Calendar of Events

Resources

Contacts

Apply for Permit /
Licence



STAY UPDATED

News

All News

Oil and Gas Activity Map Series

The Sahtu Land and Water Board has created a series of maps in relation to the 13 oil and gas exploration licences in the Tulita and K'asho Got'ine Districts. These maps identify which company holds each exploration licence, exploration work conducted back to 2010, as well as upcoming development for the winter of 2012-2013. These maps will be updated yearly to reflect the level of oil and gas exploration in the Sahtu. Visit the Presentations and Maps tab under Resources, or [click here](#).

Updated Community Engagement and Board Consultation Policy

The Land and Water Boards of the Mackenzie Valley have completed, and are pleased to present, a complete review of the draft policies and framework related to community engagement and Board consultation under the Mackenzie Valley Resource Management Act (MVRMA).

The Board has also released three documents: (1) *Draft Community Engagement and Board Consultation Policy*; (2) *Draft Community Engagement Guidelines for Applicants and Holders of Water Licences and Land Use Permits*; and (3) *Draft Reference Outline: Procedural Framework for Addressing the Adequacy of Crown Consultation*.

These documents and a reviewer's guide to key changes to the package may be viewed at <http://mvlwb.com/current-initiatives/working-groups>

Please send your comments to Sarah Elsasser, selsasser@wlvb.ca, by November 19, 2012.

MVLWB September Newsletter

The September [Newsletter of the Land and Water Boards of the Mackenzie Valley](#) is now available. This edition's content:

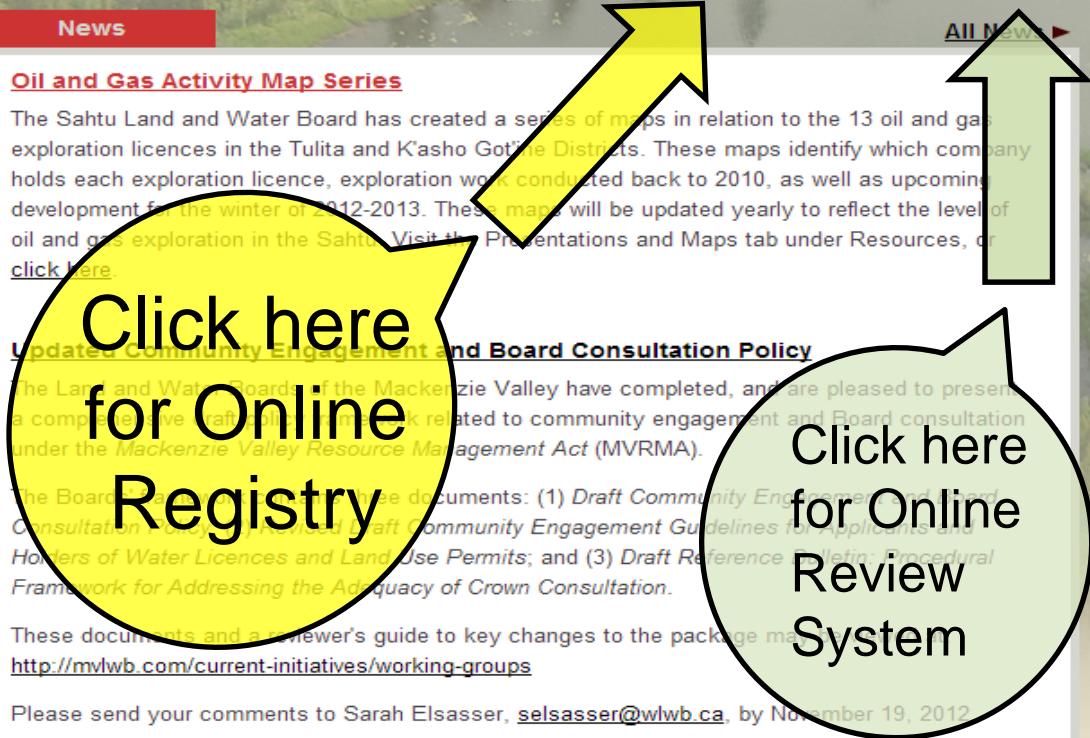
- Geothermal Gets Green Light
- Farewell to GLWB Executive Director Robert Alexie
- New Oil and Gas Licences Issued
- Licence for Operation Nabook

www.slwb.com

- Sahtu Land and Water Board Prepares for Oil and Gas Exploration
- Public Hearing 101
- Rivers to Oceans Day

Management Framework for Oil and Gas Exploration

Management Framework for Oil and Gas Exploration





- AANDC - Contaminants and Remediation Directorate
 - S09D-001
 - S09L8-001
 - S06D-004
- Aboriginal Engineering Ltd.
 - S08T-004
 - PNR-08-004
- Alaska Gas Producers
 - PNR-01-003
- Alberta Star Development Corporation
 - S07C-008
 - S05C-012
 - S05C-002
- Andesite Capital LLC
 - S06C-006
- Apache Canada Ltd.
 - S04A-010
 - S04L1-011
 - S04A-011
 - S04L1-012
 - S03A-008
 - S03L1-016
 - S03A-007
 - S03L1-015
 - S05A-008
 - S05L1-005
 - S03B-001
 - S02B-006
- Archer, Cathro & Associates (1981) Limited
 - S11C-001
 - N94J228
 - N94J228
- Aur Resources Inc
 - N95F413
- BG International Limited
 - S08A-005
 - S08L1-001
 - S07B-007
- Cameco
 - S07C-011
- Canada Coast Guard and Community Wharf
 - N96X615
- CanNat Res. Inc.

Company:

File Number: S09D-001

Documents from: yyyy-m-d to yyyy-m-d Uploaded Received

Document Type:

Document Sub Type:

Keyword Search:

S09D-001 - AANDC - Contaminants and Remediation Directorate

[Staff Log In](#)

Deline District - Mining Exploration - Mine Shaft (D)

Project: The Land Use permit application is being submitted in support of the remediation activities required to cleanup the abandoned sites (including Terra, Northrim, Norex, Graham Vein and Smallwood mine sites), the abandoned El Bonanza Mine (made up of two sites including abandoned Contact Lake Mine and the abandoned Sawmill Bay site. The purpose of the remediation project is to reduce the environmental impacts of the abandoned sites which will result in an overall positive impact on the environment. Associated Water Licence is S09L8-001.

Status: Application received February 24 2009. Licence issued on July 26 2010

Type of use: Mining Exploration - Mine Shaft (D)

Start: 26/07/2010

Expiry: 25/07/2015 RO: Ian Brown

[Map it](#) | [Permalink](#)

Legend
Significant Documents
Document Uploaded in the past 21 days

Search

Along the left you will find all of our files by company.

- 1 - 41 of 41 items
- AANDC - Contaminants and Remediation Directorate**
1. Permit - Licence - Other Issuances
- All Issuances**
- S09D-001 - Land Use Permit - Jul 26_10.pdf
2. Initial Application
- Application and Related Docs**
- S09D-001 - Application - Feb 24_09.pdf
 - S09D-001 - Application - Additional Information Requested by SLWB - May 25_10.pdf
 - S09D-001 - Staff Report 1 - Application Update - May 28_09.pdf
 - S09D-001 - Staff Report 3 - Application Update - Jul 12_10.pdf
 - S09D-001 - Application - Site Maps - Feb 24_09.pdf
 - S09D-001 - Memo - Contact Lake - Backfilling by Perimeter Blasting SRK - Mar-07_08.pdf
- Consultation and Reviews**
- S09D-001 - Summary of Review Comments - May 29_09.pdf
 - S09D-001 - Summary of Review Comments - Additional Information - Jul 05_10.pdf
 - S09D-001 - Review Comment from Canadian Nuclear Safety Commission - May 15_09.pdf
 - S09D-001 - Review Comment from Deline First Nation - Jun 16_09.pdf
 - S09D-001 - Review Comment - Additional Information - from Deline Land Corp - Jun 16_09.pdf
 - S09D-001 - Review Comment from Deline Land Corp - May 22_09.pdf
 - S09D-001 - Review Comment from Dept. of Health and Social Service - May 22_09.pdf
 - S09D-001 - Review Comment from DFO to INAC - Jan 26_07.pdf
 - S09D-001 - Review Comment - Additional Information - from DFO - Jul 02_10.pdf
 - S09D-001 - Review Comment from DFO - May 15_09.pdf
 - S09D-001 - Review Comment - Additional Information - from Canadian Nuclear Safety Commission - Jul 02_10.pdf
 - S09D-001 - Review Comment - Additional Information - from ENR, YK - Jul 02_10.pdf
 - S09D-001 - Review Comment from ENR, YK - May 15_09.pdf
 - S09D-001 - Review Comment - Additional Information - from Environment Canada - Jul 02_10.pdf
 - S09D-001 - Review Comment - Additional Information - from Dept of Health and Social Services - Jul 05_10.pdf

SAHTU LAND AND WATER BOARD (SLWB) ITEMS FOR REVIEW

This page contains links to items currently under review by the Land and Water Board. By selecting the links below, reviewers can enter and submit comments, proponents can respond to comments, and Board Staff can provide responses related to the items for review.

Proponent	Item for Review	Reviews Due	
Conoco Phillips	ConocoPhillips - S145-001 - Geotechnical Land Use Permit Application	28 Feb 14	Go to Review
Conoco Phillips	ConocoPhillips - S14J-002 - S14L3-001 - Additional Multi-Season Camp	28 Feb 14	Go to Review
Imperial Oil Resources	Imperial Oil Resources Limited - Norman Wells Operations - Type A Water Licence Renewal	18 Nov 13	Go to Review
Imperial Oil Resources	Imperial Oil Resources N.W.T. Limited - S13L1-007 - Draft Water Licence - Feb 06_14	07 Mar 14	Go to Review

Applications under review.

Click here to review

ConocoPhillips - S14S-001 - Geotechnical Land Use Permit Application (SLWB)

Item Description

Dear Sir/Madam:

**Re: Land Use Permit Application
ConocoPhillips Canada
Geotechnical Exploration Program
Request for Comments**

Attached for your review and comment is a Land Use Permit Application from ConocoPhillips Canada. The requested program from ConocoPhillips includes:

- Conduct geotechnical borehole drilling within and partially outside Exploration Licence 470 during two operating seasons each year (December to April and June to October).
- ConocoPhillips plans to drill approximately 100 boreholes per year to a maximum depth of 150m to investigate surficial deposits to analyze the extent of permafrost, borrow material sources, and collect data for infrastructure planning.
- Please note that the application contains locations outside of EL 470; part of which is Sahtu Private Lands, as well as Commissioners and Private Lands on Bear Island.
 - ConocoPhillips will provide confirmation of access rights to the Sahtu Private Lands outside of their EL prior to Permit issuance.
 - ConocoPhillips has also included a letter withdrawing the Bear Island portion of the program, and as such should not be included as part of the application review.

Please submit your comments or concerns in writing to our office through the **online review system**, no later than **Friday February 28, 2014**.

Comments shall be uploaded directly to the online review system. If you are unsure of how to do this please contact the Sahtu Land and Water Board office. Should you need additional time, please contact us prior to the above noted date.

Thank you for your time and effort on this matter.

Tony Morris
Regulatory Specialist

File(s)	S14S-001 S14S-001 S14S-001 S14S-001
Proponent	Conoco Phillips
Document(s)	Land Use Permit Application 2mb Withdrawal of Bear Island Portion 1mb Removal of Activities Outside EL470 444KB Figure 2 revised area of Application 1 MB
Review Comments Due By	Feb 28, 2014
Proponent Responses Due By	Mar 7, 2014
Item For Review Distributed On	Feb 7 at 09:11 Distribution List
Contact Information	Tony Morris 867-598-2413 ext 223

Click here to view file on the Registry.

Application documents are here.

After logging in, click here to submit a comment.

Work Offline

- [Download empty Excel comment table](#)
- [Upload my comments from Excel](#)
- [Upload cover letter or general file](#)
- [Download comments requiring response](#)

Add Comment

[Add Comment](#)

View Online

- [View all comments - Print friendly](#)
- [Export all comments to Word](#)



Questions???

