

Newsletter of the Land and Water Boards of the Mackenzie Valley

SEPTEMBER 2011 VOLUME I, ISSUE 1



Inside this Issue

- **New Websites Launched**
- **MVLWB Staff Member Receives Award**
- **Perspectives on Regulatory Improvement in the Mackenzie Valley**
- **New Land and Water Board Policies and Guidelines**
- **Meet the Chairs and Directors**
- **Land Use Permits and Water Licences Issued**

“Sharing responsibility—working together to make the best decisions for the land, water, and people.”

Welcome to Our Readers

*It is our pleasure to welcome you to the first issue of the **Newsletter of the Land and Water Boards of the Mackenzie Valley**. Our goal with this new and improved newsletter is to inform you about the collective work and achievements happening under the Full Board of the Mackenzie Valley Land and Water Board (which includes the Gwich'in, Sahtu, Wek'èezhìi, and Mackenzie Valley Yellowknife Office Board operations). This is part of a broader initiative to provide integrated services, including communications, to our clients.*

In this issue you will learn more about the efforts we are making in the communications arena, including the launch of four new websites which provide up-to-date information about all aspects of the Boards' operations. The newsletter also features articles about regulatory improvement and the recent release of new policies and guidelines that we believe will contribute greatly towards the Boards' efforts to improve the regulatory system in the Mackenzie Valley. We also introduce you to and tell you a little bit more about us and our senior staff. You will also find information about the most recent permits and licence activities in the Mackenzie Valley.

We hope you enjoy this first issue. We welcome your feedback about all aspects of our work; your support keeps us on track. Please forward all comments to Shannon Ward, Manager Policy, Planning, and Communications, MVLWB (sward@mvlwb.com).

*Willard Hagen, Chair and CEO, MVLWB
Paul Sullivan, Chair, GLWB
Larry Wallace, Chair, SLWB
Violet Camsell-Blondin, Chair, WLWB*

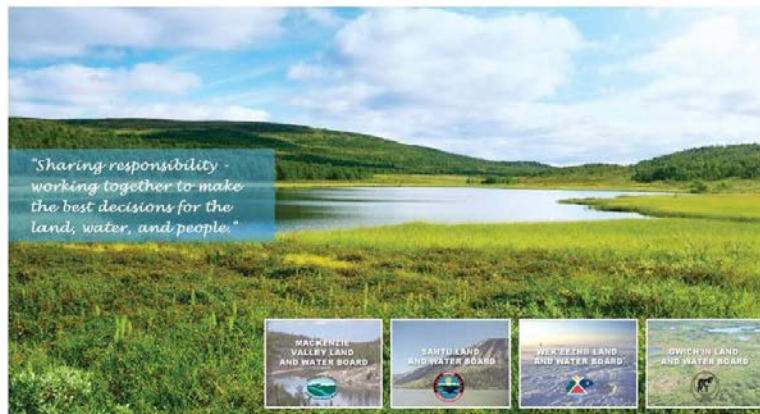
The Land and Water Boards Launch New Websites

The Gwich'in, Sahtu, and Mackenzie Valley Land and Water Boards are pleased to launch new websites, which have been modelled after the Wek'èezhii Land and Water Board's site. The sites offer up-to-date information on the co-management system in the Mackenzie Valley, extensive resource libraries, access to recent decisions of the Boards, their public registries, and contact information for staff.

To visit the websites of the Land and Water Boards of the Mackenzie Valley, go to: www.mvlwb.com, www.glwb.com, www.slwb.com, or www.wlwb.ca.

MVLWB

LAND AND WATER BOARDS OF THE MACKENZIE VALLEY



CONTACT US

MVLWB Staff Member Receives Award

MVLWB Regulatory Manager Rebecca Chouinard, on behalf of the University of British Columbia (UBC) Department of Mining Engineering and as alumni representative of the Sustainable Working Group, recently attended the International Sustainability in Mining Conference in Aachen, Germany.

At the conference Rebecca, along with former colleagues from UBC, (where Rebecca completed her Masters in Mine Engineering) hosted a session on "Sustainable Interactions and Innovations for New and Young Researchers".

Rebecca organized and Chaired this session and was awarded the SDIMI (Sustainable Development In the Minerals Industry) 2011 award presented each year for outstanding contributions to the conference by the Institute of Mining Engineering.



Perspectives on Regulatory Improvement in the Mackenzie Valley

The MVLWB responds to the federal government's Action Plan to Improve Northern Regulatory Regimes

In May, as preparation to participate in the federal government's Action Plan to Improve Northern Regulatory Regimes (Action Plan), the Land and Water Boards released a position paper entitled *Perspectives on Regulatory Improvement in the Mackenzie Valley (Perspectives)*. It is our response to the federal government's Action Plan, as well as a presentation of our collective efforts towards ensuring regulatory excellence in regards to fulfilling our mandate.

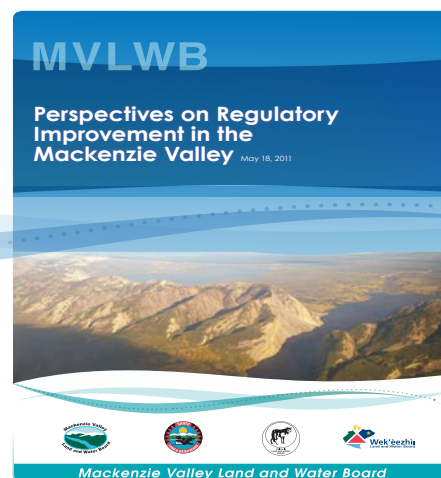
Perspectives begins by providing an overview and history of the Boards—how we were created and the values and objectives upon which we carry out our mandate—re-affirming that we are different, and that we are different “by design”. It describes the actions the Boards are taking to address regulatory improvements that are within our authority, including the creation of new policies and guidelines*, as well as a renewed focus on strategic governance and planning.

Perspectives also details our recommendations with respect to legislative changes and policy issues that address the foundational gaps in the system. These missing elements range from the completion of land claims to addressing NWT-specific policy with respect to the “duty to consult”. We also recommend amendments to the *Mackenzie Valley Resource Management Act*, the *NWT Waters Act*, and associated regulations.

Read the full version at <http://bit.ly/p6TNag>

For more information, contact MVLWB Executive Director Zabey Nevitt at 867.766.7457, zabey@mvlwb.com, or Policy, Planning, and Communications Manager Shannon Ward at 867-766-7458, sward@mvlwb.com.

*See page 4 for details of our new *Water Quality and Effluent Policy and Guidelines for Developing a Waste Management Plan*.



New Land and Water Board Policies and Guidelines

In March 2008, the Mackenzie Valley, Gwich'in, Sahtu, and the Wek'èezhii Land and Water Boards established the Standard Procedures and Consistency Working Groups (WGs). Their purpose is to improve regulatory consistency across the four Boards, while respecting regional differences. This initiative is streamlining and simplifying our regulatory processes and improving clarity and certainty to industry and other parties.

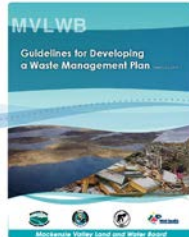
In December 2010, the Full Board of the MVLWB approved two Working Group documents: *Guidelines for Developing a Waste Management Plan* and *Water and Effluent Quality Management Policy*. Both the policy and the guidelines address concerns raised in several audits of the NWT regulatory system.

The next steps for the WGs will be to monitor the effectiveness of the policy and guidelines, adjust where necessary, and develop a long-term maintenance plan to ensure both documents remain current.



Water and Effluent Quality Management Policy

This policy describes the Boards' approach to setting limits, called effluent quality criteria (EQC), on the amount of waste that can be discharged from a project into the environment. By describing a standard, transparent approach to setting EQC, the policy addresses concerns raised in several audits of the NWT regulatory system. The policy has been in effect since March 31, 2011. The Working Group will now begin developing guidelines to support the policy. The policy can be viewed at <http://bit.ly/pucDLs>



Guidelines for Developing a Waste Management Plan

These guidelines outline the expectations of the Land and Water Boards with respect to waste management plans. The guidelines will be beneficial to all stakeholders because they will help to ensure waste management plans are submitted in a consistent format, provide a template for proponents to write a plan, and act as a benchmark for reviewers to evaluate a proponent's plan. Status: The guidelines have been in effect since March 31 2011. View the Guidelines at <http://bit.ly/p0TYGm>

Other Guidelines

The MVLWBs officially adopted Aboriginal Affairs and Northern Development Canada's (AANDC's) *Guidelines for Spill Contingency Planning*. The guidelines are now being applied throughout the NWT and are available at <http://bit.ly/qeir12>

For Review

DRAFT Guidelines for the Closure and Reclamation of Advanced Mineral Exploration and Mine Sites in the Northwest Territories.

These guidelines, created in collaboration with AANDC, are presented in two parts: Part 1 applies to the regulatory process and the expected content for a closure and reclamation plan; Part 2 relates to technical considerations for closure, with a focus on mine sites. We look forward to reviewing any feedback you may have on the guidelines. Please submit comments and questions to Michele Culhane (Michele.Culhane@aadnc-aadnc.gc.ca, 867-669-2845) or Ryan Fequet (rfequet@wlwb.ca, 867-765-4589) by **Friday, September 30, 2011.**

For more information, visit the Working Groups' website at <http://bit.ly/qgeOvF> or contact Patty Ewaschuk, Working Group Coordinator, at pewaschuk@wlwb.ca or (905) 852-1516

Meet the Chairs

Willard Hagen, MVLWB

Mr. Willard Hagen is of Gwich'in ancestry and was born in Tsiigehtchic, raised in the Travaillant River area, and completed his formal education in Wildlife Management in Inuvik. Mr. Hagen established Aklak Air in the late 1970s and has been a bush pilot and owner/operator for 30 years.



Mr. Hagen was the Director of the Metis Development Corporation from 1978 to 1980. He was elected President of the Gwich'in Tribal Council in 1990 where his administration negotiated, ratified, and signed the Gwich'in Comprehensive Land Claim Agreement. He was also active in drafting and signing the Mackenzie Valley Resource Management Act. As the President of the Tribal Council, Mr. Hagen also served as the President of the Gwich'in Development Corporation and as a Member of the Gwich'in Arbitration Panel. In 1996, Mr.

Hagen became a Member of the Gwich'in Land and Water Board (GLWB), and in 2002 he became the Chair. In 2005, along with carrying out his duties as Chair of the GLWB, Mr. Hagen became Acting Chair of the Mackenzie Valley Land and Water Board. In November 2010, Willard was re-appointed for a second consecutive three-year term as the Chair/CEO of the MVLWB by the Minister of Aboriginal Affairs and Northern Development Canada.

Paul Sullivan, GLWB



Paul Sullivan was born and raised in Inuvik. In 1992 he received his Aircraft Maintenance Engineer Journeyman Certificate from Stevenson Aviation College in Winnipeg, and in 2006 he received his Commercial Helicopters Pilot Licence from Big Horn Helicopter Training School in Calgary. Paul was appointed to the Gwich'in Land and Water Board in 2004, then re-appointed in 2007, and then appointed Chair in 2008. Paul lives in Inuvik and works at Canadian Helicopters.

Larry Wallace, SLWB



Larry is an owner and operator of the Rayuka Inn located at Norman Wells, NT. A resident of the Northwest Territories since 1969 and in the Sahtu area for the past 35 years, a previous bank manager and general manager, he has been in private business since 1985. Larry has held various business and volunteer organization positions and participates on a number of town council committees. Mr. Wallace has been Chairperson of the SLWB since its original inception in November of 1996. He has been a member of the NWT Premier's Panel on Employment and the Economy, past President of the Norman Wells & District Chamber of Commerce, past Vice-President of the NWT Softball Association, and is a former Volunteer of the Year and Curling Club Sportsman of the Year in Norman Wells.

Violet Camsell-Blondin, WLWB



Violet is a Tlicho citizen, was born and raised in Behchoko, and completed high-school in Yellowknife. Continuing education has been important to Violet who completed a General Management Certificate Program through the University of Lethbridge, as well as numerous other business and community administration courses.

Before being appointed to the Wek'èezhii Land and Water Board, Violet was the coordinator for the Dogrib Renewable Resources Committee. She was also a member of the West Kitikmeot Slave Study Society which conducted traditional knowledge and scientific research. Violet was the Executive Director of the Dogrib Treaty 11 Council and provided administrative support for the finalization of the Tlicho Self Government and Land Claims Agreement.

Meet the Executive Directors

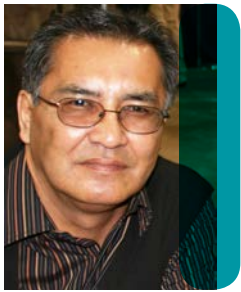
Zabey Nevitt, MVLWB



Zabey Nevitt has been the Executive Director of the Mackenzie Valley Land and Water Board (MVLWB) since January 2010. Prior to this, he was Executive Director of the Wek'èezhii Land and Water Board (WLWB) since its establishment in October 2005. Zabey oversaw the establishment of the WLWB which includes, under its mandate, the regulation of the Diavik and Ekati Diamond Mines. Before he joined the WLWB, he held the position of Executive Director of the Dogrib Treaty 11 Council and, on establishment of the Tlicho Government, worked as the Acting Director of the Tlicho

Lands Protection Department. Zabey has also worked as the Manager of the Independent Environmental Monitoring Agency—the public watchdog for the Ekati Diamond Mine. Zabey has a degree in Civil and Environmental Engineering and a number of years experience working in northern communities and with the people of the North. Specific experiences have focused on Aboriginal governance, environmental management, and the northern regulatory system. Facilitating effective communications between industry, government, Aboriginal leadership, and community members has become a key part of Zabey's professional life.

Robert Alexie, GLWB



Robert Arthur Alexie was born and raised in Fort McPherson and completed high school in Inuvik. Robert worked at airports in the North as an Observer Communicator, then as a Flight Service Specialist before completing the Public and Business Administration Program at Thebacha College in Fort Smith. He became the Chief of the Tetlit Gwich'in of Fort McPherson, served two terms as vice-president of the Gwich'in Tribal Council, and was instrumental in obtaining a land claim agreement for the Gwich'in of the Northwest Territories. Robert also wrote two books – Porcupines and China Dolls and The Pale Indian – and is an avid amateur photographer. Robert now lives in Inuvik. He started his work as GLWB Executive Director in October 1999.

Paul Dixon, SLWB



Paul Dixon joined the SLWB in the fall of 2010 and came to the family of Land and Water Boards in order to pursue a northern life. Paul has degrees in Physical Geography and geographic information system (GIS) from the University of Lethbridge and from The British Columbia Institute of Technology. Starting his professional career in Municipal government, then forestry, Paul moved into an ecology role with Parks Canada where he worked for eight years, first in Inuvik and then at the Western and Northern Service Centre in Winnipeg.

Mark Cliffe-Phillips, WLWB



Mark has been working with the Land and Water Boards of the Mackenzie Valley since 2003, when he started as a Water Technician with the Sahtu Land and Water Board. He took up the role of Regulatory Specialist with the Wek'èezhii Land and Water Board in 2007 and has been serving in his current capacity as Executive Director since February 2010. Mark's educational background includes undergraduate and graduate studies in physical geography at Thompson Rivers University and the University of Guelph, including research projects in forest hydrology and soil water monitoring.

Prior to working with the Land and Water Boards, he worked with the Sahtu Educational Council and GNWT-RWED at the Turton Lake Trapping Education Program, as well as many years as an outdoor educator and guide. Outside of the office, Mark participates in competitive bicycle races across Canada.

Land Use Permits and Water Licences Issued

January 1 - September 19, 2011



Key	LW Board	Land and Water	Company	Project, Location
1	MVLWB	MV2001A0050/ MV2010L10012	Paramount	Sump access, maintenance Cameron Hills
2	MVLWB	MV2010A0054 / MV2010L1-0015	Paramount	Well site access and preparation
3	MVLWB	MV2009X0040 / MV2010L8-0016	NTPC	Replace existing Bluefish hydroelectric dam/install camp
4	MVLWB	MV20110009/ MV2011L8-0003	Penn West	Well site closure and reclamation, Fort Liard
Land Use Permits				
5	MVLWB	MV2010D0053	De Beers Canada	Mining activities, Snap Lake Mine
6	MVLWB	MV2010Q0056	Fort Smith Construction	Quarry, Hwy #5, near Salt Mountain
7	MVLWB	MV2010C0046	Seabridge Gold	Diamond drilling, 240 km NE of YK
8	MVLWB	MV2010C0015	TNR Gold Corp.,	Grass roots exploration, Moose Mtn
9	MVLWB	MV2009X0040	NTPC	Bluefish Hydroelectric facility
10	MVLWB	MV2011Q0001	Rowe's Construction	Gravel supply activities, Hay River
11	MVLWB	MV2011E0004	Beaver Enterprises	Road reclamation, Fort Liard
12	MVLWB	MV2011C0005	Peregrine Diamonds Ltd.	Mineral Exploration, Lac De Gras
13	MVLWB	MV2010C0055	North American Tungsten	Mineral Exploration, CanTung Mine
14	MVLWB	MV2009C0001	WML Exploration BC Ltd.	Mineral Exploration, Snowbird
15	MVLWB	MV2011C0006	Avalon Rare Metals Inc.	Drilling, Thor Lake
16	MVLWB	MV2011F0013	Det'on Cho RTL Construction	Winter roads: Tibbitt-Contwoyto and Pallat Lake to Lupin and Jericho
17	MVLWB	MV2011F008	Jayhawk Sand Resources	Access routes, Pointed Mountain
18	GLWB	G11Q001	Bob's Welding	Quarry, Dempster Hwy., km 251
19	GLWB	G11Q002	Yukon Engineering Services	Quarry, Dempster Hwy., km 178
20	WLWB	W2010S0007	SNC Lavalin	Investigation, hydro, La Martre Falls
21	WLWB	W2011J0001	Mantle Diamonds Canada Inc	Circle K camp, east of Yamba Lake
22	WLWB	W2011T0002	Diavik Diamond Mines Inc	Habitat Compensation, M-Lakes
23	WLWB	W2011W0003	Sands Enterprise	Hwy. 3, km 186
Water Licences				
24	MVLWB	MV2010L8-0010	GNWT-DOT	Type B
25	MVLWB	MV2009L4-0004	Northwest Territories Power Corp	Type A - Bluefish Hydro Dam
26	SLWB	S11L8-0001	Imperial Oil Resources Limited	Type B Water
27	SLWB	S11C-001	Archer Cathro and Associates	Type B, mineral exploration

Other permit- and licence-related activities

New Applications Received

MVLWB - 19
GLWB - 0
SLWB - 2
WLWB - 6

Amendments

MVLWB - 16
GLWB - 1
SLWB - 2
WLWB - 9

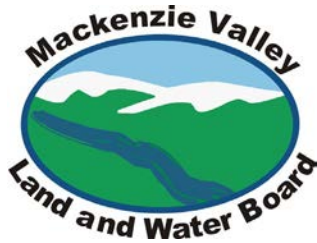
Closures

MVLWB - 12
SLWB - 4
GLWB - 4
WLWB - 2

Report and Plan Approvals

MVLWB - 10
GLWB - 0
SLWB - 3
WLWB - 17

The Land and Water Boards of the Mackenzie Valley



Mackenzie Valley Land and Water
Board
Box 2130
7th Floor - 4922, 48th Street
Yellowknife NT Canada
X1A 2P6
Phone: (867) 669-0506
Fax: (867) 873-6610
www.mvlwb.com



Gwich'in Land and Water Board
P.O. Box 2018
Inuvik, NT Canada
X0E 0T0
Phone: (867) 777-7960
Fax: (867) 777-7970
www.glwb.com



Sahtu Land and Water Board
P.O. Box 1,
Ft. Good Hope, NT
Canada
X0E 0H0
Phone: (867) 598-2413
Fax: (867) 598-2325
www.slwb.com



Wek'eezhii Land and Water Board
Box 32,
Wekweeti, NT X0E 1W0
Phone: (867) 713-2500
Fax: (867) 713-2502
and
#1-4905 48th St,
Yellowknife, NT Canada
X1A 3S3
Phone: (867) 765-4592
Fax: (867) 669-9593
www.wlwb.ca

